



**117/125A Jerralong Drive Schofields NSW**

2  2  1 

Syon Property Group presents this well-positioned two-bedroom apartment, offering a balanced layout, natural light, and low-maintenance living within one of Schofields' most active growth pockets.

Set within a contemporary complex, the residence is suited to both owner-occupiers and investors seeking a straightforward asset with stable fundamentals and strong rental appeal.

**Property Snapshot:**

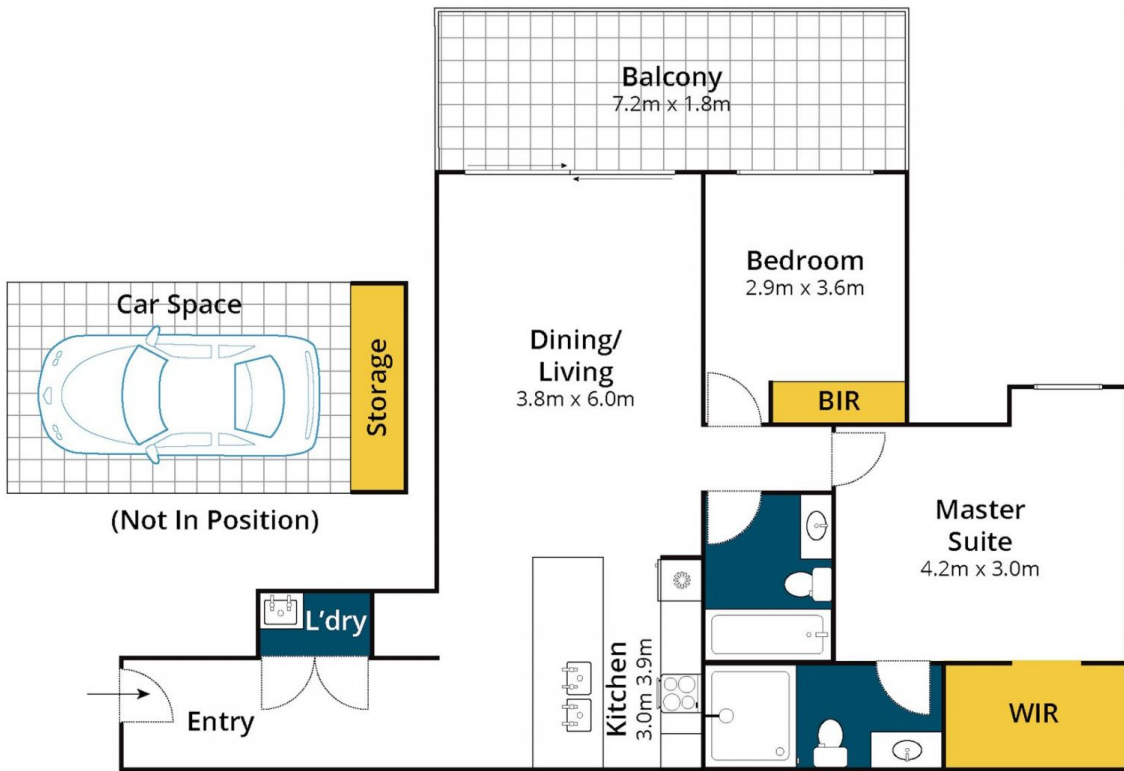
- ? Two bedrooms | Two bathrooms | One secure car space
- ? Functional open-plan living and dining configuration
- ? Well-appointed kitchen with quality appliances including dishwasher

**Type** : Apartment  
**Price** : Contact Agent  
**View** : <https://www.syonpropertygroup.com.au/8703754>



**Nilesh Padhiyar**  
**0433 848 485**

[For full version visit the website](https://www.syonpropertygroup.com.au)



Whilst [bwr.com.au](http://bwr.com.au) has made every attempt to ensure the accuracy of the floor plan contained here, measurements are approximate and no responsibility is taken for any error, omission, or mis-statement. This plan is for illustrative purposes only.