



G10/1A Stoke Street Schofields NSW

2  2  1 

Positioned within a well-connected precinct of Schofields, this modern south-facing apartment delivers a practical, low-maintenance lifestyle suited to owner-occupiers, investors, and buyers seeking a secure lock-and-leave residence.

Offering 2 bedrooms, 2 bathrooms, 1 secure car space, and a separate storage cage, the layout has been thoughtfully designed to provide clear separation between the living and accommodation areas for everyday functionality and comfort.

Conveniently located approximately 3 minutes' walk to Schofields Train Station and Schofields Village, the property is also situated within the Galungara Public School

Type : Apartment

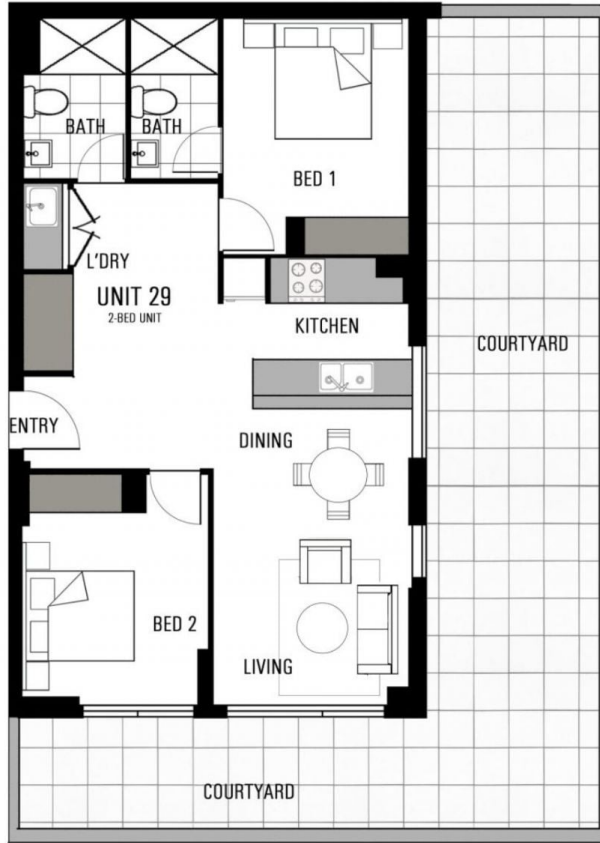
Price : Price Guide: \$699,990 - \$719,990

View : <https://www.syonpropertygroup.com.au/8698281>



Nilesh Padhiyar
0433 848 485

[For full version visit the website](https://www.syonpropertygroup.com.au)



	
INTERNAL:	69 sqm
EXTERNAL:	77 sqm
Storage:	3 sqm
Unit Total:	146 sqm
Parking:	1

Disclaimer: For Marketing purpose only