

310/1A Stoke Street Schofields NSW

2  2  1 

Positioned within a well-connected pocket of Schofields, this modern south-facing apartment offers a practical, low-maintenance layout suited to owner-occupiers, investors, and those seeking a secure, lock-and-leave lifestyle.

Comprising 2 bedrooms, 2 bathrooms, 1 secure car space, and a dedicated storage area, the residence is designed with clear separation between living and accommodation zones, supporting functional day-to-day living.

Located approximately 3 minutes' walk to Schofields Train Station and Schofields Village, the property also falls within the Galungara Public School catchment.

Type : Apartment

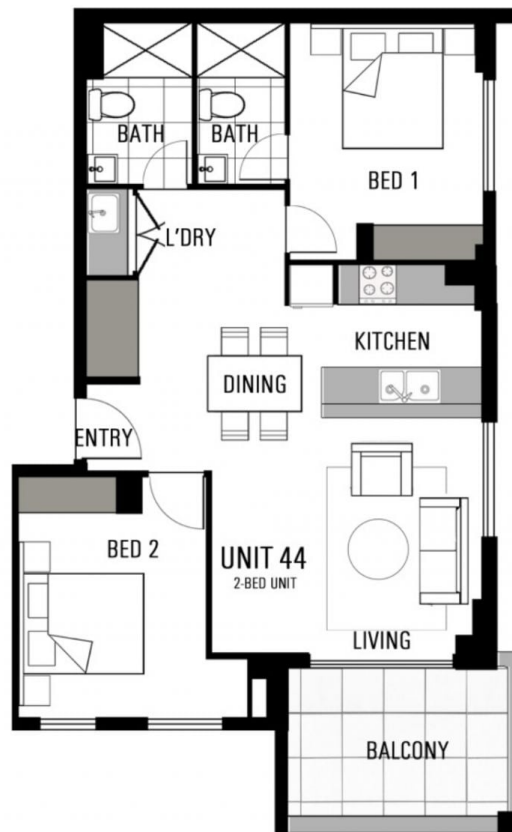
Price : \$699,990

View : <https://www.syonpropertygroup.com.au/8680978>



Nilesh Padhiyar
0433 848 485

[For full version visit the website](https://www.syonpropertygroup.com.au)



INTERNAL:	70	sqm
EXTERNAL:	8	sqm
Storage:	2	sqm
Unit Total:	78	sqm

Parking: 1

Disclaimer: For Marketing purpose only